

**Finnish Peatland Society and the IPS at Säätytalo, Helsinki**  
**Thursday 25 November 2010**

# What is the IPS?

**Björn Hånell**



**SLU**

---

Swedish University of  
Agricultural Sciences

London 1950

The image shows the Palace of Westminster in London, viewed from the River Thames. The building is a large, ornate Gothic structure with many spires and towers. The sky is blue with some white clouds. In the foreground, there is a small boat on the water. The text is overlaid on the image.

# The Fourth World Power Conference

a peat contact group was formed

”to promote the exchange of information on  
all aspects of peat research and development”

An aerial photograph of a lush green valley in Ireland. The landscape is characterized by rolling hills, vibrant green fields, and a small pond in the lower left. In the distance, blue mountains are visible under a blue sky with light, wispy clouds. The overall scene is peaceful and scenic.

Ireland 1954

# **1<sup>st</sup> International Peat Congress**

**International Executive Committee**

Leningrad 1963

**2<sup>nd</sup> International Peat Congress**



**1965**

the International Executive Committee  
met to consider the formation of  
**an International Peat Society**

Quebec City 1968

**3<sup>rd</sup> International Peat Congress**

**and, in addition:**

**the International Peat Society  
was established!**



# Mission:



International Peat Society | IMTG MTO

**The IPS is dedicated to fostering the advancement, exchange and communication of scientific, technical and social knowledge and understanding for the wise use of peatlands and peat**

Vision:



International Peat Society | IMTG MTO

**Peatlands are managed for the benefit  
of mankind, now and in the future**



**Canada Czech Republic Estonia Finland France**

**Hungary Germany Latvia Lithuania Malaysia Indonesia**

**Ireland the Netherlands**



**Norway**

**Poland Russia**



**Sweden**

**the United Kingdom**

International Peat Society | **IMTG MTO**

**the USA**

**Belarus Belgium Burundi Chile Denmark**

**Italy Japan Romania Slovenia Spain**

**What is the IPS doing??**

**Working hard!!**

**in 9 Commissions**

# Commission I – Survey, Stratigraphy, Classification and Conservation of peatlands



# Commission II - Industrial Utilisation of Peat and Peatlands, for Energy, Horticulture, Environmental Protection and other Purposes



# Commission III - Utilisation of Peat and Peatlands in Agriculture



# Commission IV - Chemical, Physical and Biological Characteristics of Peat



# Commission V - After-use of Cut-over and Disturbed Peatlands



# Commission VI - Peat Balneology, Medicine and Therapeutics





# Commission VII - Ecology and Management on Forested Peatlands

A photograph of a forest with many tall, thin trees and a dense undergrowth of green plants and moss. The trees are mostly deciduous with some evergreens in the foreground. The ground is covered in a thick layer of green moss and small plants. The lighting is soft, suggesting a late afternoon or early morning setting.

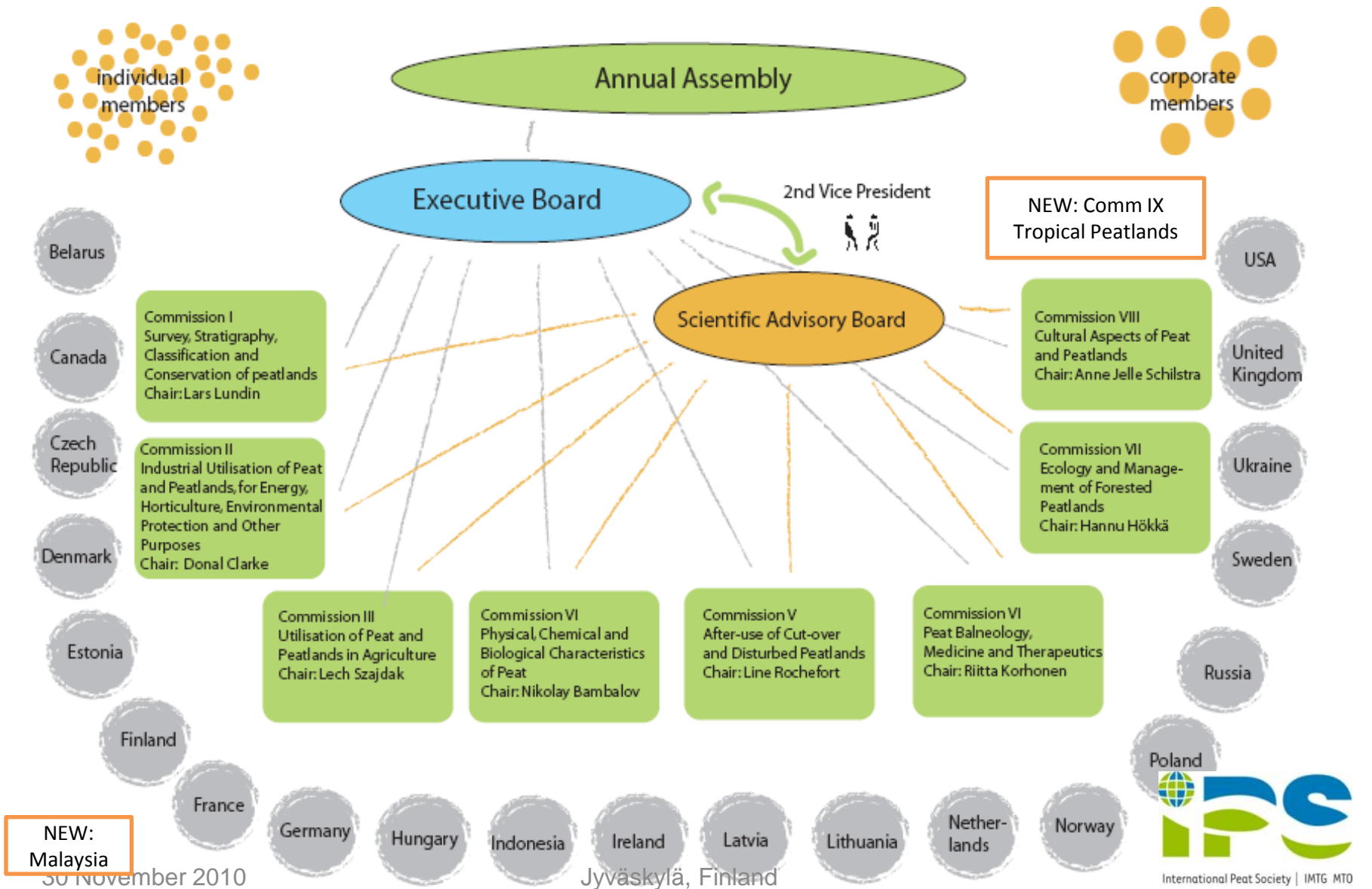
# Commission VIII – Cultural aspects of peat and peatlands



# Commission IX – Tropical peatlands



# Organisation



# Executive Board

- **President**  
Donal Clarke, Ireland
- **1st Vice President**  
Björn Hånell, Sweden
- **2nd Vice President**  
Paul Short, Canada



30 November 2010

Jyväskylä, Finland

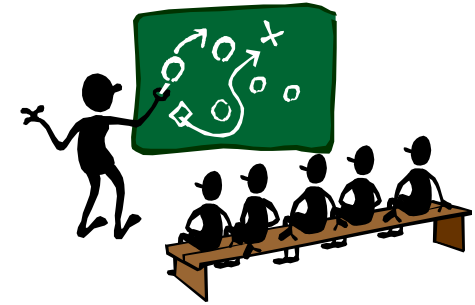
## Ordinary Board members

- Jutta Zeitz, Germany
- Satu Helynen, Finland
- Erki Niitlaan, Estonia
- Lech Szajdak, Poland
- Valerijs Kozlovs, Latvia

## Honorary President

- R. A. Robertson, United Kingdom

# Strategic Goals



**Communications and Public Relations** – communicate with members, provide the general public with information on the role of peatlands and their wise use

**Responsibility to Members** - provide communication, education, research support and advocacy related to our members' business, scientific and environmental interests

**Government** - to establish and to enhance relationships with governmental, inter-governmental, and international organizations to influence matters affecting peat and peatlands

**Research and Development** - to promote research into peatlands, peat and their utilization and disseminate the obtained results

**Partnerships** - to work proactively through partnership, networking and cooperation

# Tools and Projects

**Peatlands International** 2x annually, printed magazine

- \* monthly e-mail newsletter **Peat News**
- \* congresses, symposia and workshops
- \* proceedings and other publications
- \* collection and distribution of statistics
- \* **Peat Dictionary**
- \* ad hoc campaigns





Main Peatlands and peat About us Events Publications Cooperation Join us!

About IPS



Text here. Text here. Text here. Text here. Text here. Text here. Text here. Text here.

Text here. Text here. Text here. Text here. Text here. Text here. Text here. Text here.

Text here. Text here. Text here. Text here. Text here. Text here. Text here. Text here.

Read more »

Video bank



More videos »

IPS news

Heading Ingres + two sentences

Heading Ingres + two sentences

Heading Ingres + two sentences

More IPS news »

IPS documents

Heading/Subject Date 8.10.2010

Heading/Subject Date 8.10.2010

Heading/Subject Date 8.10.2010

Heading/Subject Date 8.10.2010

More documents »

Banners



Peat Science via Google Scholar

Heading Ingres + two sentences Ingres + two sentences Ingres + two sentences

Heading Ingres + two sentences Ingres + two sentences Ingres + two sentences

Heading Ingres + two sentences Ingres + two sentences Ingres + two sentences

More Google news »

Peatlands in Google News

Heading Ingres + two sentences Ingres + two sentences Ingres + two sentences

Heading Ingres + two sentences Ingres + two sentences Ingres + two sentences

Heading Ingres + two sentences Ingres + two sentences Ingres + two sentences

More Google news »

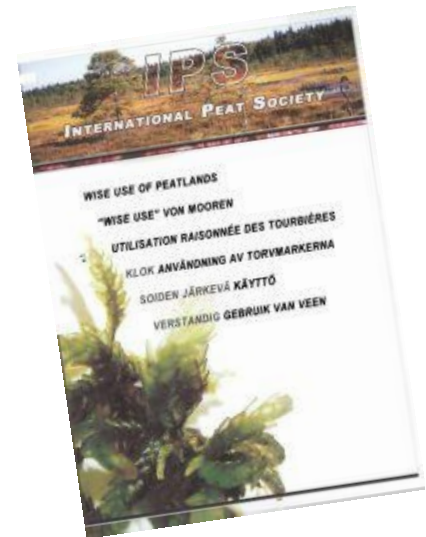


# Recent accomplishments

**Responsible Peatland Management Strategy 2010**

**Book and DVD [Wise Use of Mires and Peatlands](#)**

**Book [Peatlands and Climate Change](#) 2008**



# Events

## International Peat Congresses

1954, Dublin, Ireland

1963, Leningrad, USSR

1968, Quebec, Canada

1972, Espoo, Finland

1976, Poznan, Poland

1980, Duluth, U.S.A.

1984, Dublin, Ireland



International Peat Society | IMTG MTO

1988, Leningrad, USSR

1992, Uppsala, Sweden

1996, Bremen, Germany

2000, Quebec, Canada

2004, Tampere, Finland

2008, Tullamore, Ireland

**2012, Stockholm Sweden**

**2016, Kuching Malaysia**

# Events (cont.)

## Symposia, workshops and other meetings

- Annual Meetings and Excursions in 10 different countries
- 1997 - 2010 Peat in Horticulture symposia in Pärnu, Amsterdam, Angers
- 2009 - 2010 Responsible Peatland Management workshops in Helsinki, Amsterdam, Belfast, Brussels and Jyväskylä
- 2010 Seminars on Peat Technology and After-Use in Jyväskylä

**Additionally regular conferences, workshops, excursions and other events of Commissions and National Committees.**



# Membership

about 1,500 members from 35 countries



platform to benefit both **science and industry**

**19 National Committees** (Europe 15, North America 2, South-East Asia 2)

**9 Commissions** open to all members

financed by **National Committees** and **industrial organisations**

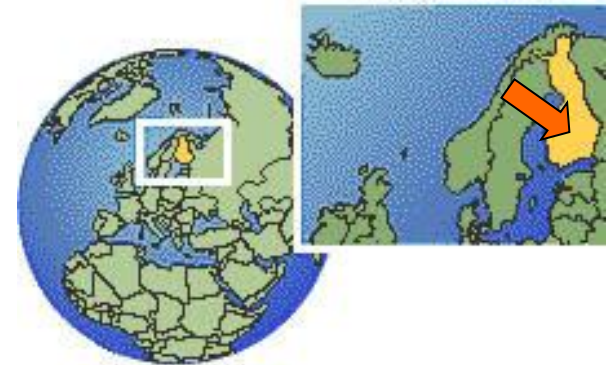
# Membership Benefits



- strong **cooperation** with other players of the same field
- **communication** and info exchange with experts from science and industry
- latest news and background knowledge available via **IPS publications**
- access to special **events**, publications, statistics etc.
- informing decision makers and the public within a broader scope
- building international and local **networks**

# IPS Secretariat

in Jyväskylä, Finland



**Mr. Jaakko Silpola**, M.Sc. Agr. For.  
Secretary General  
e-mail: [jaakko.silpola@peatsociety.org](mailto:jaakko.silpola@peatsociety.org)



**Ms. Susann Warnecke**, Dipl. Kfm. (FH)  
Communications Manager  
e-mail: [susann.warnecke@peatsociety.org](mailto:susann.warnecke@peatsociety.org)



International Peat Society | IMTG MTO

**the global network**  
**for peat and peatland science,**  
**and for the wise use of peatlands**



International Peat Society | IMTG MTO